



# Birth flower 3

September, October, November, December

SO-G145



*Aster*

9월 - 파꽃, Aster



*Marigold*

10월 - 메리골드, Marigold



*Chrysanthemum*

11월 - 국화, Chrysanthemum



*Poinsettia*

12월 - 포인세티아, Poinsettia



SO-G14-3  
SO-G14-4

별도 구매  
(Separate Purchase)



대형 쿠션 big cushion



쿠션 cushion



액자 frame



소다

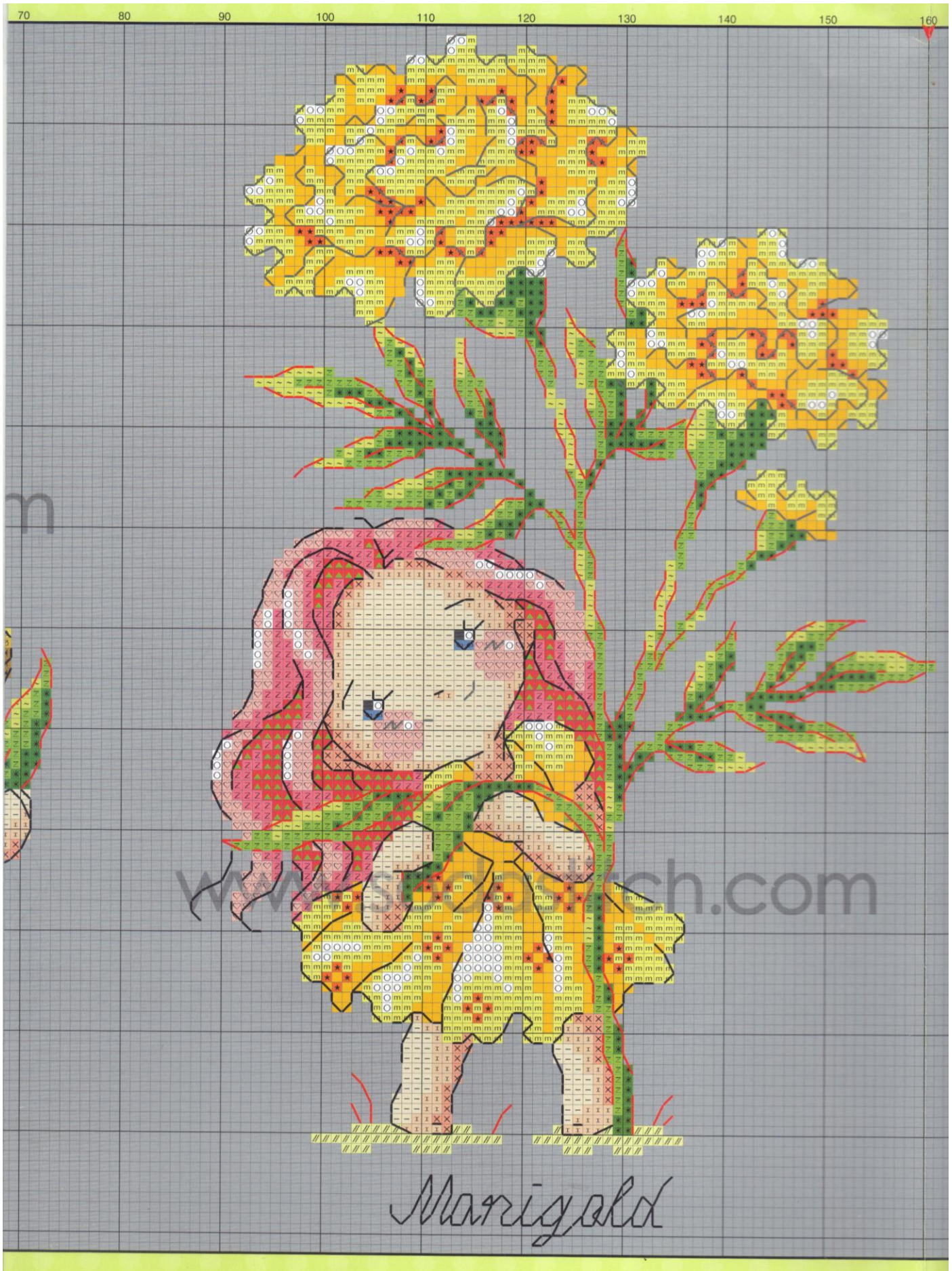
www.SODAstitch.com

designed & printed in Korea

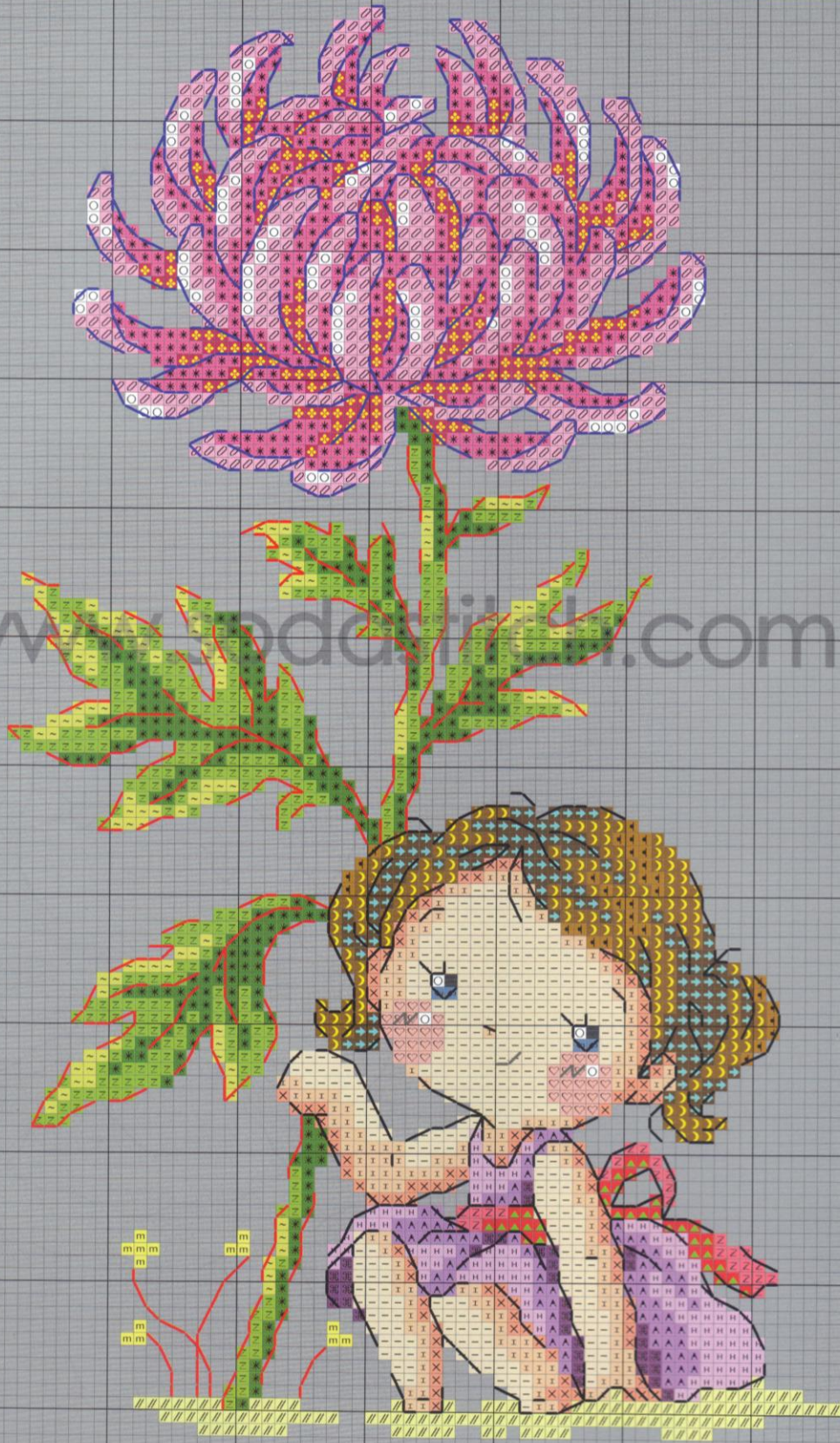






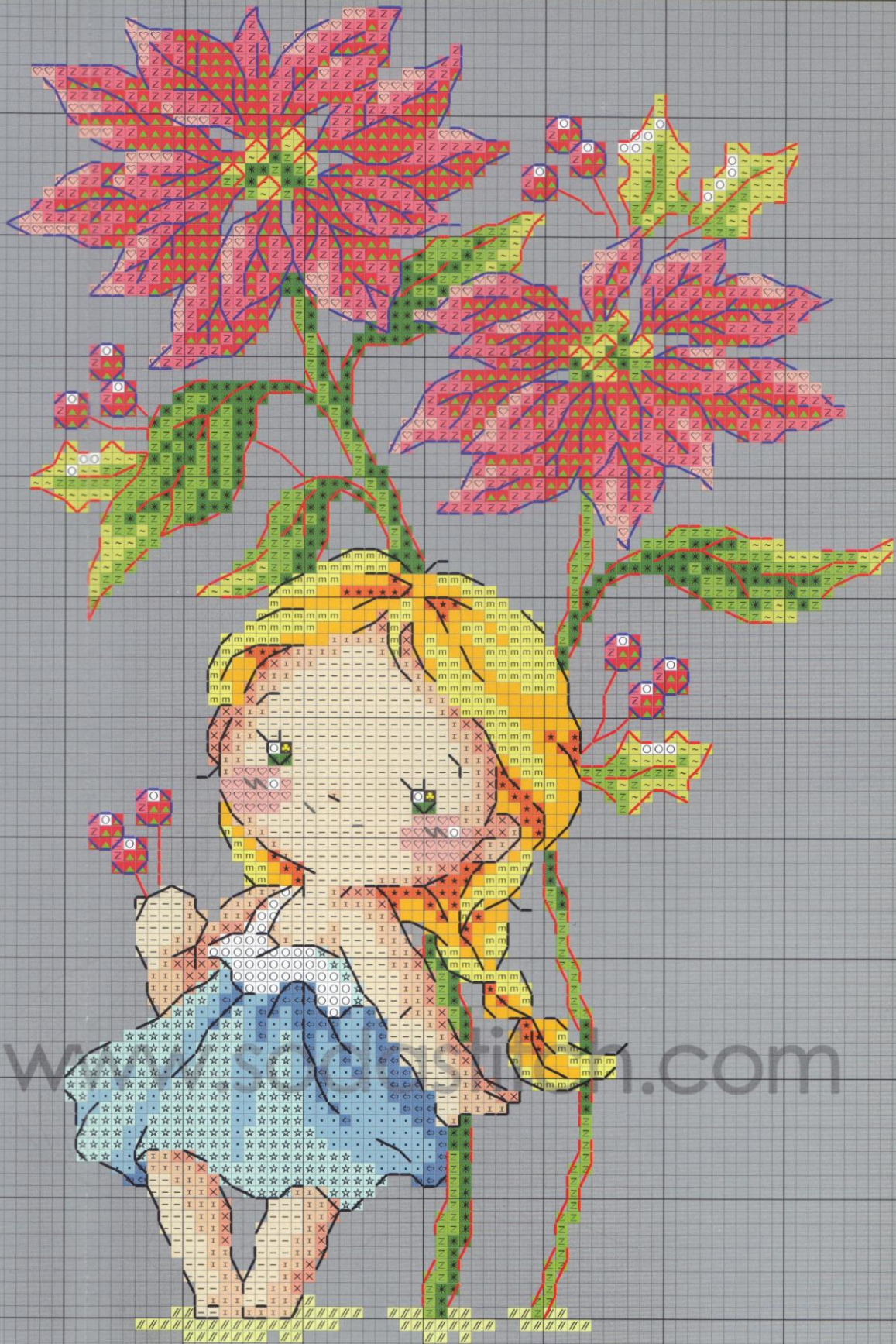






Chrysanthemum





*Poinsettia*



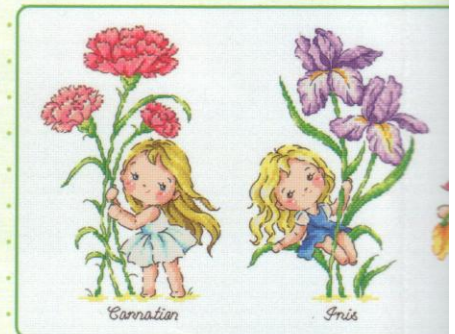
## ♥ Full Stitch ♥

	DMC	ANC	VENUS	Kit No.	COLOR
H	153	95	2803	1	Violet-VY LT
~	165	253	2815	2	Moss Green-VY LT
A	209	109	2312	3	Lavender-DK
■	310	403	2800	4	Black
✕	352	9	2123	5	Coral-LT
☾	434	310	2732	6	Brown-LT
■	519	1038	2403	7	Sky Blue
■	552	99	2322	8	Violet-MD
✿	601	57	2268	9	Cranberry-DK
✱	603	62	2266	10	Cranberry
◊	605	50	2260	11	Cranberry-VY LT
✱	701	227	2563	12	Christmas Green-LT
Z	704	256	2560	13	Chartreuse-BRT
m	727	293	2021	14	Topaz-VY LT
■	742	303	2075	15	Tangerine-LT
☆	747	158	2401	16	Sky Blue-VY LT
I	754	1012	2121	17	Peach-LT
♥	761	1021	2221	18	Salmon-LT
■	782	308	2661	19	Topaz-DK
➡	801	359	2734	20	Coffee Brown-DK
✿	824	164	2415	21	Blue-VY DK
➡	826	161	2413	22	Blue-MD
■	938	381	2736	23	Coffee Brown-UL DK
—	948	1011	2120	24	Peach-VY LT
★	970	316	2065	25	Pumpkin-LT
//	3078	292	2020	26	Golden Yellow-VY LT
Z	3706	33	2211	27	Melon-MD
▲	3801	35	2213	28	Christmas Red-LT
3	3820	306	2032	29	Straw-DK
△	3822	295	2030	30	Straw-LT
○	BLANC	2	2011	31	White

## ♥ Back Stitch ♥

	DMC	ANC	VENUS
—	319	218	2554
—	550	102	2327
—	815	43	2219
—	938	381	2736
—	3801	35	2213

## 소다신도안 New Pattern



SO-G143 Birth  
January, February,

